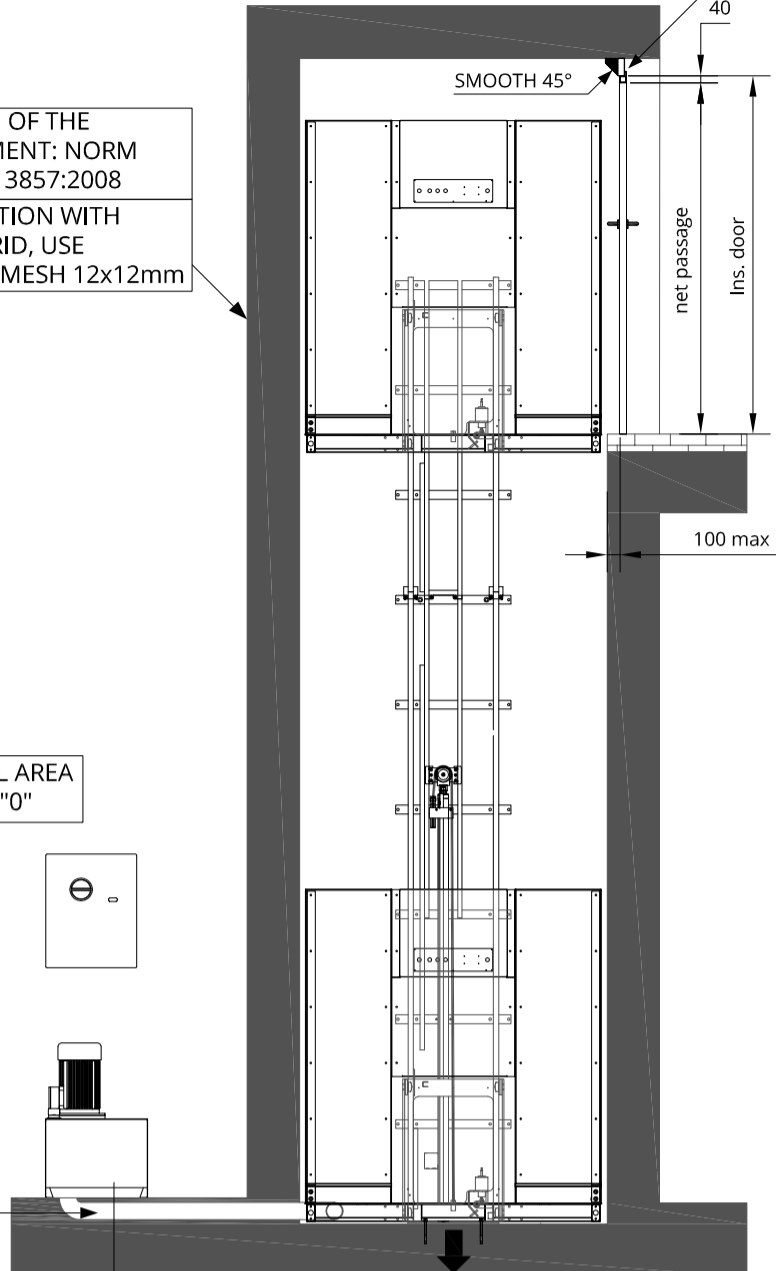


FOR THE DOOR INSTALLATION
PLEASE CONSULT THE
INSTALLATION MANUAL

PROTECTION OF THE
COMPARTMENT: NORM
UNI-EN-ISO-13857:2008
FOR PROTECTION WITH
METALLIC GRID, USE
A COMPACT MESH 12x12mm

TECHNICAL AREA
AT FLOOR "0"

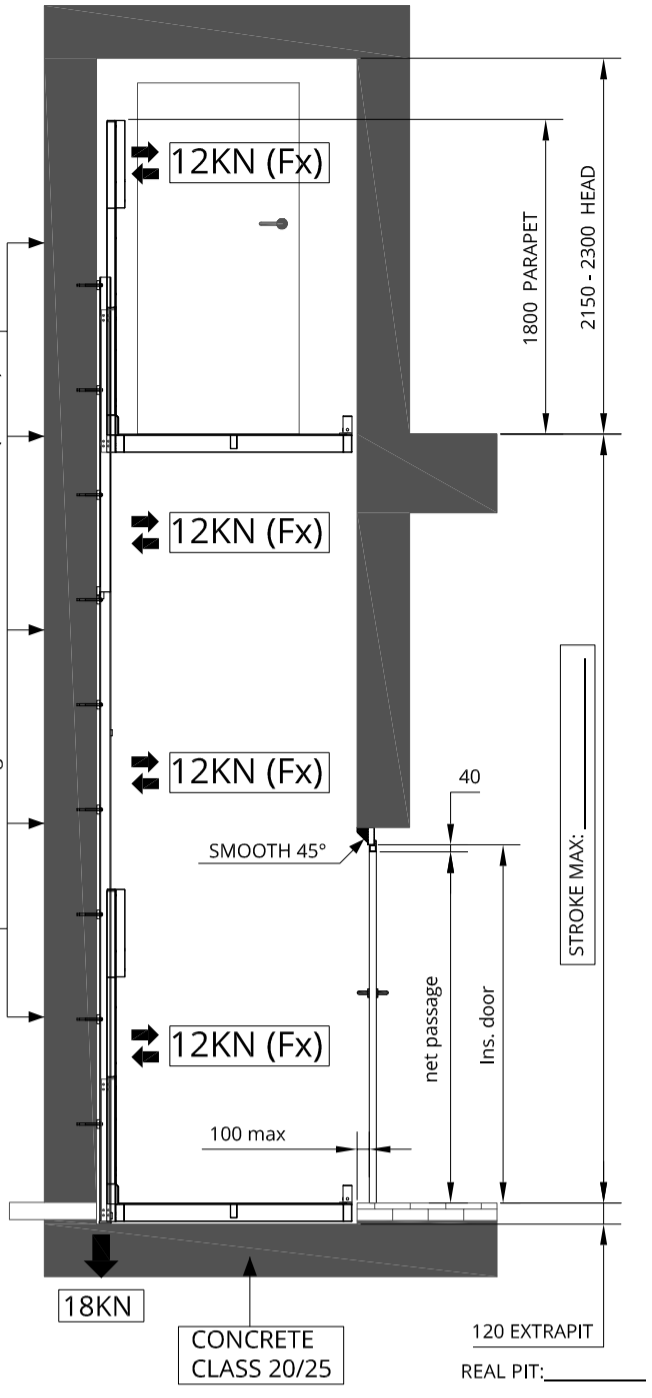


PREPARE CORRUGATED
TUBE Ø10cm TO THE
TECHNICAL AREA

MAX DISTANCE
FROM GOODSLIFT TO
TECHNICAL AREA 4MT
(L. standard tube = 6 mt)

18KN

WALL IN CONCRETE CLASS 20/25
Standard fixing: Anchor mod. Fischer FBN II 12x146

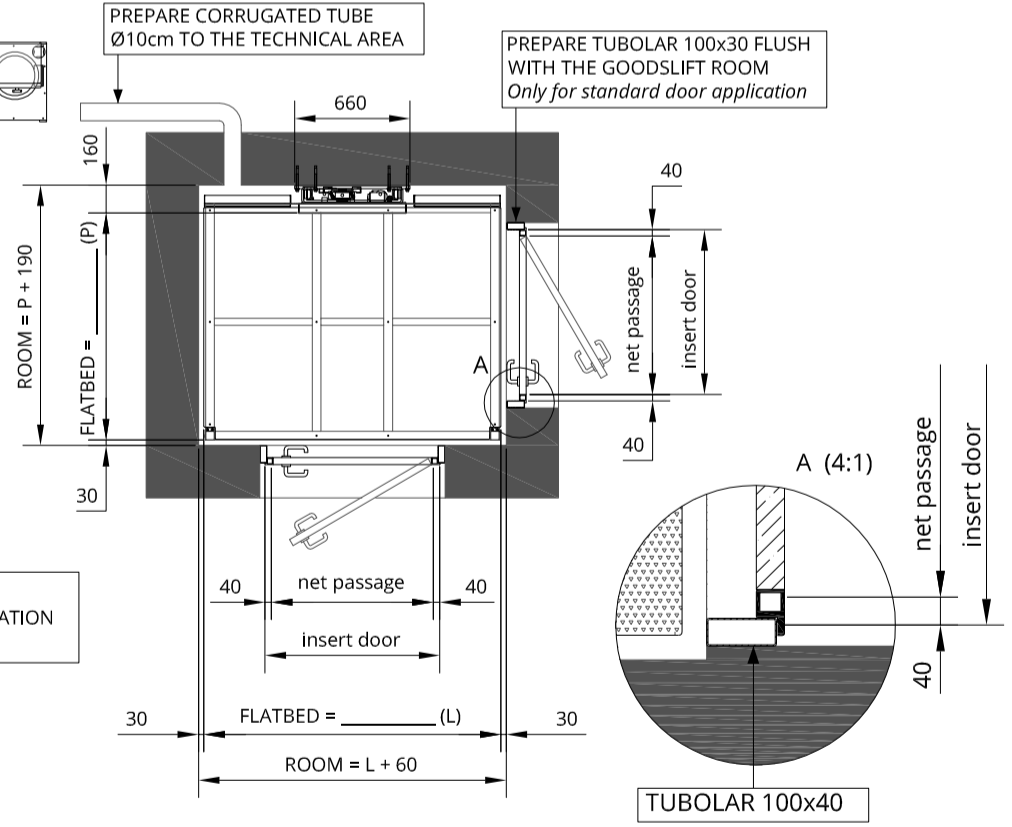


STROKE MAX:

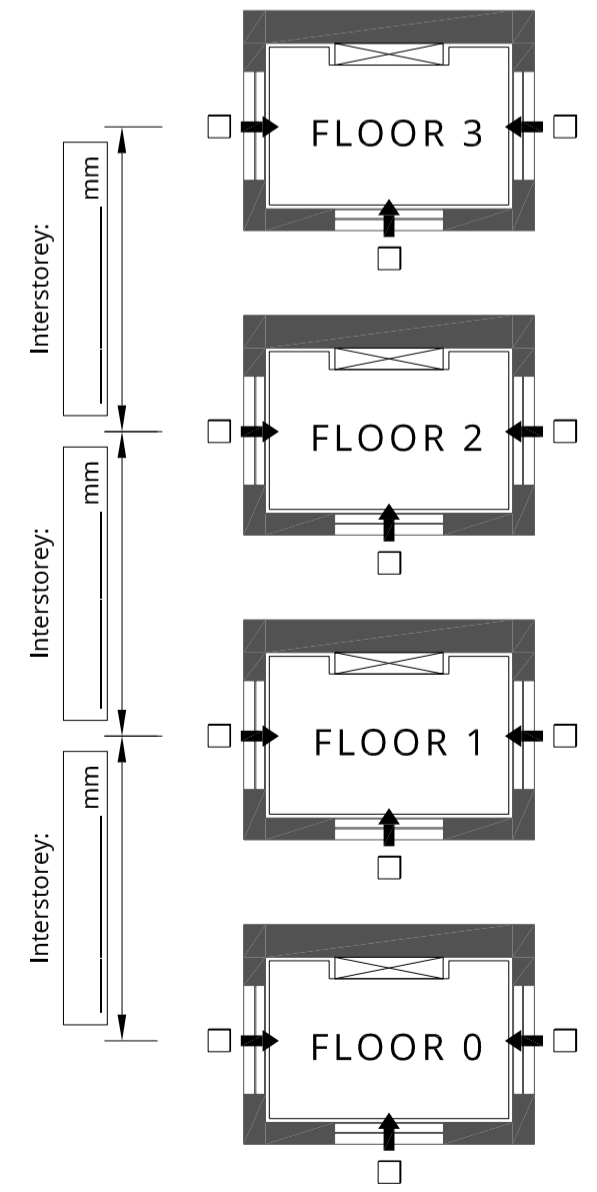
TECHNICAL AREA

PREPARE CORRUGATED TUBE
Ø10cm TO THE TECHNICAL AREA

PREPARE TUBULAR 100x30 FLUSH
WITH THE GOODSLIFT ROOM
Only for standard door application



MARK THE ENTRANCES AND THE HEIGHT OF FLOOR



MODEL: UP3 - 300Kg UP6 - 600Kg

Date: _____

Signature for approval: _____

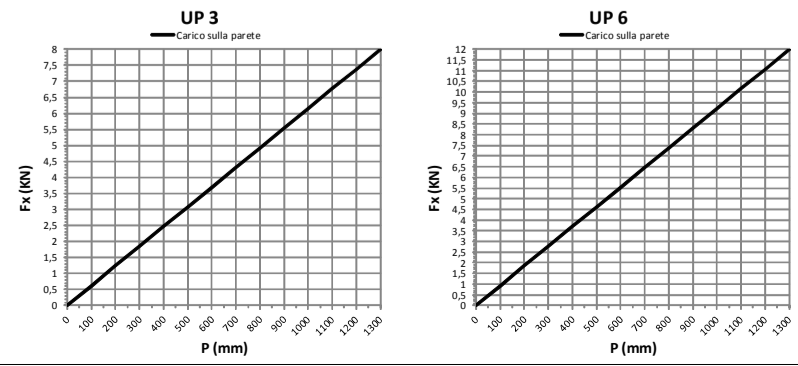


MISURE IN mm

STROKE AND FLATBED DIMENSION			
MODEL	WIDTH (mm)	DEPTH (mm)	STROKE MAX (mm)
UP 3	1700	1300	7000
UP 6	1700	1300	7000

Motore	Tensione funzionamento	Avviamento	Interruttore consigliato*	Corrente nominale	Corrente avviamento
1,5kW	220 V - monofase	Diretto	2x16A id=0,3A	9,5	28
2,2kW	220 V - monofase	Diretto	2x16A id=0,3A	10,5	32

Force on the wall, Fx function of depth flatbed



UP DYNAMIC Via Modigliani, 22 - 37045 Legnago (VR) - Tel.0442.59.01.29 - Fax. 0442.59.90.91
www.updynamic.com - e-mail: info@updynamic.com

Q.TÀ _____ DESCRIZIONE: _____ Cliente: _____
 MODEL: UP3 - 300Kg Disegnato: _____ Data: 07/11/14
 UP6 - 600Kg Disegno n°: _____
 STROKE MAX: 7000mm TAV-UP36-SPB01
 WITH OPERATOR ON BOARD Sostituito da: _____
 Sostituisce il: _____